

Oracle® Application Server InterConnect

Configuration Editor User's Guide

10g (9.0.4)

Part No. B10420-01

September 2003

Oracle Application Server InterConnect Configuration Editor User's Guide, 10g (9.0.4)

Part No. B10420-01

Copyright © 2002, 2003 Oracle Corporation. All rights reserved.

The Programs (which include both the software and documentation) contain proprietary information of Oracle Corporation; they are provided under a license agreement containing restrictions on use and disclosure and are also protected by copyright, patent and other intellectual and industrial property laws. Reverse engineering, disassembly or decompilation of the Programs, except to the extent required to obtain interoperability with other independently created software or as specified by law, is prohibited.

The information contained in this document is subject to change without notice. If you find any problems in the documentation, please report them to us in writing. Oracle Corporation does not warrant that this document is error-free. Except as may be expressly permitted in your license agreement for these Programs, no part of these Programs may be reproduced or transmitted in any form or by any means, electronic or mechanical, for any purpose, without the express written permission of Oracle Corporation.

If the Programs are delivered to the U.S. Government or anyone licensing or using the programs on behalf of the U.S. Government, the following notice is applicable:

Restricted Rights Notice Programs delivered subject to the DOD FAR Supplement are "commercial computer software" and use, duplication, and disclosure of the Programs, including documentation, shall be subject to the licensing restrictions set forth in the applicable Oracle license agreement. Otherwise, Programs delivered subject to the Federal Acquisition Regulations are "restricted computer software" and use, duplication, and disclosure of the Programs shall be subject to the restrictions in FAR 52.227-19, Commercial Computer Software - Restricted Rights (June, 1987). Oracle Corporation, 500 Oracle Parkway, Redwood City, CA 94065.

The Programs are not intended for use in any nuclear, aviation, mass transit, medical, or other inherently dangerous applications. It shall be the licensee's responsibility to take all appropriate fail-safe, backup, redundancy, and other measures to ensure the safe use of such applications if the Programs are used for such purposes, and Oracle Corporation disclaims liability for any damages caused by such use of the Programs.

Oracle is a registered trademark, and Oracle*MetaLink*, Oracle Store, Oracle*9i*, SQL*Plus, and PL/SQL are trademarks or registered trademarks of Oracle Corporation. Other names may be trademarks of their respective owners.

Contents

| | |
|--|------------|
| Send Us Your Comments | v |
| Preface..... | vii |
| 1 Introduction to the Configuration Editor | |
| Using the Master Key Setting Tool..... | 1-2 |
| Setting the Master Key | 1-3 |
| Multiple Users Using a Windows Development Machine (R/3 Specific)..... | 1-5 |
| Work Around | 1-6 |
| 2 Using the Configuration Editor | |
| Starting the Configuration Editor | 2-2 |
| Getting Help | 2-4 |
| Menu Items | 2-5 |
| Creating a Profile..... | 2-6 |
| Exporting a Profile | 2-8 |
| Importing a Profile..... | 2-9 |
| Index | |

Send Us Your Comments

Oracle Application Server InterConnect Configuration Editor User's Guide, 10g (9.0.4)

Part No. B10420-01

Oracle Corporation welcomes your comments and suggestions on the quality and usefulness of this document. Your input is an important part of the information used for revision.

- Did you find any errors?
- Is the information clearly presented?
- Do you need more information? If so, where?
- Are the examples correct? Do you need more examples?
- What features did you like most?

If you find any errors or have any other suggestions for improvement, please indicate the document title and part number, and the chapter, section, and page number (if available). You can send comments to us in the following ways:

- Electronic mail: appserverdocs_us@oracle.com
- FAX: 650-506-7375 Attn: Oracle Application Server Documentation Manager
- Postal service:
Oracle Corporation
Oracle Application Server Documentation
500 Oracle Parkway, M/S 10p6
Redwood Shores, CA 94065
USA

If you would like a reply, please give your name, address, telephone number, and (optionally) electronic mail address.

If you have problems with the software, please contact your local Oracle Support Services.

Preface

This preface contains these topics:

- [Intended Audience](#)
- [Documentation Accessibility](#)
- [Organization](#)
- [Related Documentation](#)
- [Conventions](#)

Intended Audience

Oracle Application Server InterConnect is intended for those who perform the following tasks:

- install applications
- maintain applications

Documentation Accessibility

Our goal is to make Oracle products, services, and supporting documentation accessible, with good usability, to the disabled community. To that end, our documentation includes features that make information available to users of assistive technology. This documentation is available in HTML format, and contains markup to facilitate access by the disabled community. Standards will continue to evolve over time, and Oracle Corporation is actively engaged with other market-leading technology vendors to address technical obstacles so that our documentation can be accessible to all of our customers. For additional information, visit the Oracle Accessibility Program Web site at

<http://www.oracle.com/accessibility/>

Accessibility of Code Examples in Documentation JAWS, a Windows screen reader, may not always correctly read the code examples in this document. The conventions for writing code require that closing braces should appear on an otherwise empty line; however, JAWS may not always read a line of text that consists solely of a bracket or brace.

Accessibility of Links to External Web Sites in Documentation This documentation may contain links to Web sites of other companies or organizations that Oracle Corporation does not own or control. Oracle Corporation neither evaluates nor makes any representations regarding the accessibility of these Web sites.

Organization

This document contains:

Chapter 1, "Introduction to the Configuration Editor"

This chapter describes the Configuration Editor.

Chapter 2, "Using the Configuration Editor"

This chapter describes using the Configuration Editor.

Related Documentation

For more information, see these Oracle resources:

- *Oracle Application Server InterConnect User's Guide*
- *Oracle Application Server InterConnect Installation Guide*

Printed documentation is available for sale in the Oracle Store at

<http://oraclestore.oracle.com/>

To download free release notes, installation documentation, white papers, or other collateral, please visit the Oracle Technology Network (OTN). You must register online before using OTN; registration is free and can be done at

<http://otn.oracle.com/membership/>

If you already have a username and password for OTN, then you can go directly to the documentation section of the OTN Web site at

<http://otn.oracle.com/documentation/>

Conventions

This section describes the conventions used in the text and code examples of this documentation set. It describes:

- [Conventions in Text](#)
- [Conventions in Code Examples](#)
- [Conventions for Microsoft Windows Operating Systems](#)

Conventions in Text

We use various conventions in text to help you more quickly identify special terms. The following table describes those conventions and provides examples of their use.

| Convention | Meaning | Example |
|--|---|---|
| Bold | Bold typeface indicates terms that are defined in the text or terms that appear in a glossary, or both. | When you specify this clause, you create an index-organized table . |
| <i>Italics</i> | Italic typeface indicates book titles or emphasis. | <i>Oracle9i Database Concepts</i> Ensure that the recovery catalog and target database do <i>not</i> reside on the same disk. |
| UPPERCASE monospace (fixed-width) font | Uppercase monospace typeface indicates elements supplied by the system. Such elements include parameters, privileges, datatypes, RMAN keywords, SQL keywords, SQL*Plus or utility commands, packages and methods, as well as system-supplied column names, database objects and structures, usernames, and roles. | You can specify this clause only for a NUMBER column. You can back up the database by using the BACKUP command. Query the TABLE_NAME column in the USER_TABLES data dictionary view. Use the DBMS_STATS.GENERATE_STATS procedure. |
| lowercase monospace (fixed-width) font | Lowercase monospace typeface indicates executables, filenames, directory names, and sample user-supplied elements. Such elements include computer and database names, net service names, and connect identifiers, as well as user-supplied database objects and structures, column names, packages and classes, usernames and roles, program units, and parameter values. Note: Some programmatic elements use a mixture of UPPERCASE and lowercase. Enter these elements as shown. | Enter sqlplus to open SQL*Plus. The password is specified in the orapwd file. Back up the datafiles and control files in the /disk1/oracle/dbs directory. The department_id, department_name, and location_id columns are in the hr.departments table. Set the QUERY_REWRITE_ENABLED initialization parameter to true. Connect as oe user. The JRepUtil class implements these methods. |
| <i>lowercase italic monospace (fixed-width) font</i> | Lowercase italic monospace font represents placeholders or variables. | You can specify the <i>parallel_clause</i> . Run <i>Uold_release</i> .SQL where <i>old_release</i> refers to the release you installed prior to upgrading. |

Conventions in Code Examples

Code examples illustrate SQL, PL/SQL, SQL*Plus, or other command-line statements. They are displayed in a monospace (fixed-width) font and separated from normal text as shown in this example:

```
SELECT username FROM dba_users WHERE username = 'MIGRATE';
```

The following table describes typographic conventions used in code examples and provides examples of their use.

| Convention | Meaning | Example |
|----------------|--|---|
| [] | Brackets enclose one or more optional items. Do not enter the brackets. | DECIMAL (<i>digits</i> [, <i>precision</i>]) |
| { } | Braces enclose two or more items, one of which is required. Do not enter the braces. | {ENABLE DISABLE} |
| | A vertical bar represents a choice of two or more options within brackets or braces. Enter one of the options. Do not enter the vertical bar. | {ENABLE DISABLE} [COMPRESS NOCOMPRESS] |
| ... | Horizontal ellipsis points indicate either: <ul style="list-style-type: none"> That we have omitted parts of the code that are not directly related to the example That you can repeat a portion of the code | CREATE TABLE ... AS <i>subquery</i> ; SELECT <i>col1</i> , <i>col2</i> , ... , <i>coln</i> FROM employees; |
| . | Vertical ellipsis points indicate that we have omitted several lines of code not directly related to the example. | |
| Other notation | You must enter symbols other than brackets, braces, vertical bars, and ellipsis points as shown. | acctbal NUMBER(11,2); acct CONSTANT NUMBER(4) := 3; |
| <i>Italics</i> | Italicized text indicates placeholders or variables for which you must supply particular values. | CONNECT SYSTEM/ <i>system_password</i> DB_NAME = <i>database_name</i> |
| UPPERCASE | Uppercase typeface indicates elements supplied by the system. We show these terms in uppercase in order to distinguish them from terms you define. Unless terms appear in brackets, enter them in the order and with the spelling shown. However, because these terms are not case sensitive, you can enter them in lowercase. | SELECT last_name, employee_id FROM employees; SELECT * FROM USER_TABLES; DROP TABLE hr.employees; |

| Convention | Meaning | Example |
|------------|--|---|
| lowercase | Lowercase typeface indicates programmatic elements that you supply. For example, lowercase indicates names of tables, columns, or files. Note: Some programmatic elements use a mixture of UPPERCASE and lowercase. Enter these elements as shown. | <pre>SELECT last_name, employee_id FROM employees; sqlplus hr/hr CREATE USER mjones IDENTIFIED BY ty3MU9;</pre> |

Conventions for Microsoft Windows Operating Systems

The following table describes conventions for Microsoft Windows operating systems and provides examples of their use.

| Convention | Meaning | Example |
|--------------------------|--|---|
| Choose Start > | How to start a program. | To start the Oracle Database Configuration Assistant, choose Start > Programs > Oracle - <i>HOME_NAME</i> > Configuration and Migration Tools > Database Configuration Assistant. |
| File and directory names | File and directory names are not case sensitive. The following special characters are not allowed: left angle bracket (<), right angle bracket (>), colon (:), double quotation marks ("), slash (/), pipe (), and dash (-). The special character backslash (\) is treated as an element separator, even when it appears in quotes. If the file name begins with \\, then Windows assumes it uses the Universal Naming Convention. | <pre>c:\winnt "\"system32 is the same as C:\WINNT\SYSTEM32</pre> |
| C:\> | Represents the Windows command prompt of the current hard disk drive. The escape character in a command prompt is the caret (^). Your prompt reflects the subdirectory in which you are working. Referred to as the <i>command prompt</i> in this manual. | C:\oracle\oradata> |

| Convention | Meaning | Example |
|---|--|--|
| | The backslash (\) special character is sometimes required as an escape character for the double quotation mark (") special character at the Windows command prompt. Parentheses and the single quotation mark (') do not require an escape character. Refer to your Windows operating system documentation for more information on escape and special characters. | <pre>C:\>exp scott/tiger TABLES=emp QUERY=\"WHERE job='SALESMAN' and sal<1600\" C:\>imp SYSTEM/password FROMUSER=scott TABLES=(emp, dept)</pre> |
| <i>HOME_NAME</i> | Represents the Oracle home name. The home name can be up to 16 alphanumeric characters. The only special character allowed in the home name is the underscore. | <pre>C:\> net start OracleHOME_ NAMEtnslistener</pre> |
| <i>ORACLE_HOME</i> and <i>ORACLE_</i> <i>BASE</i> | <p>In releases prior to Oracle8i release 8.1.3, when you installed Oracle components, all subdirectories were located under a top level <i>ORACLE_HOME</i> directory that by default used one of the following names:</p> <ul style="list-style-type: none"> ■ C:\orant for Windows NT ■ C:\orawin95 for Windows 95 ■ C:\orawin98 for Windows 98 <p>This release complies with Optimal Flexible Architecture (OFA) guidelines. All subdirectories are not under a top level <i>ORACLE_HOME</i> directory. There is a top level directory called <i>ORACLE_BASE</i> that by default is C:\oracle. If you install Oracle9i release 1 (9.0.1) on a computer with no other Oracle software installed, then the default setting for the first Oracle home directory is C:\oracle\ora90. The Oracle home directory is located directly under <i>ORACLE_BASE</i>.</p> <p>All directory path examples in this guide follow OFA conventions.</p> | Go to the <i>ORACLE_BASE\ORACLE_HOME\rdms\admin</i> directory. |

Introduction to the Configuration Editor

A profile is a group of settings edited by the configuration editors that can be attached to a service to specify start up conditions during runtime. Oracle Application Server InterConnect (OracleAS InterConnect) Configuration Editor allows you to create and edit these profiles.

The following topics are discussed in this chapter:

- [Using the Master Key Setting Tool](#)
- [Setting the Master Key](#)
- [Multiple Users Using a Windows Development Machine \(R/3 Specific\)](#)

Using the Master Key Setting Tool

Profiles are sensitive to the Master Key setting. The role of the Master Key is to encrypt security and password information, for example, for R/3 or PeopleSoft™, provided in the Configuration Editor for a specific profile.

The iStudio browser uses the iStudio profile to access to various service provider systems. If using a shared machine, and User1 has set a Master Key, ensure to set the Master Key same as that of User1 before accessing the Configuration Editor. It is also recommended to set the Master Key when you are exporting an iStudio profile to another machine.

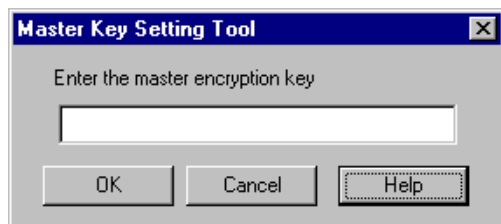
Setting the Master Key

Use the Master Key Setting Tool to set the master key string. To start the Master Key Setting Tool, type the following command at the command prompt:

```
chsetkey
```

- On Windows—The browser brings up the Master Key Setting Tool dialog, which prompts you to enter the master encryption key.
- On Unix—The Master Key Setting Tool prompts you for a Master Key at the command prompt.

Figure 1–1 Master Key Setting Tool Dialog



You can use any alpha/numeric combination for the Master Key. After setting the new Master Key, the new key is active and replaces any other key previously set. If you are exporting the profile after you have set the master key, make sure to use the same key when importing the profile on the other machines.

If you have previously used iStudio to expose components or to create events and procedures, you do not have to redo any of your work. Setting the new key is transparent to any work previously done.

Multiple Users Using a Windows Development Machine (R/3 Specific)

If more than one person uses the same Windows Development machine, the information in the default and reference login to R/3 is permanently corrupted. The following example explains this statement:

1. User1 logs onto an Windows machine and sets the settings in the Configuration Editor.
2. User1 logs out.
3. User2 logs in and accesses the profile settings. The information in the Default and Reference logins are corrupt.
4. User2 logs out.
5. User1 logs in again and accesses the Configuration Editor. The values in the Default and Reference logins are corrupt.

Work Around

The following example provides a workaround for the corruption of the default and reference log in:

1. User1 logs onto an Windows machine and creates a profile or uses an existing profile.
2. User1 uses the Master Key utility to enter a key.
3. User1 logs off.
4. User2 logs on.
5. Before User2 accesses any product features such as the Configuration Editor, User2 must use the Master Key utility to enter the same key that User1 had created. From then on, there is no further corruption of data.

Note: Any additional user on that machine must use the same procedure as User2.

Using the Configuration Editor

This chapter describes how to use the Configuration Editor to create and edit profiles. The following topics are discussed:

- [Starting the Configuration Editor](#)
- [Getting Help](#)
- [Menu Items](#)
- [Creating a Profile](#)
- [Exporting a Profile](#)
- [Importing a Profile](#)

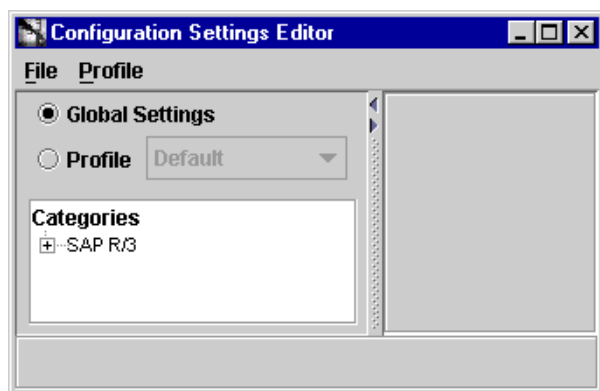
Starting the Configuration Editor

To start the Configuration Editor using a command prompt:

1. Change directories to the installation directory.
2. Type `configeditor`.
3. Press **Enter**.

The Configuration Editor displays.

Figure 2–1 Configuration Editor Main Menu



The following list describes the components on this dialog:

- **Global Settings**—Used to change the default values. Each adapter can have its own default values set by a user under the [GLOBAL SETTINGS] profile for that adapter.

You can change individual user defined-profile settings by unchecking **Use Global Settings** in the Configuration Editor. Changing these settings will not affect the [GLOBAL SETTINGS] values.

- **Profile**—Used to create a new profile.

See Also: ["Creating a Profile"](#) on page 2-6

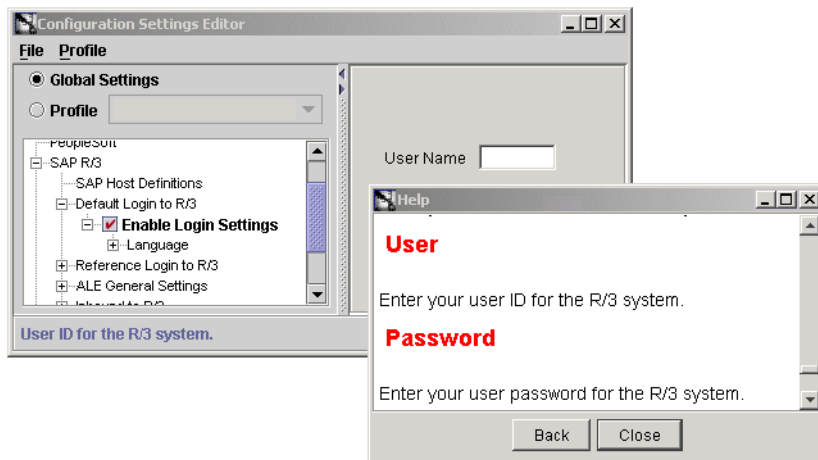
Getting Help

In any dialog displayed by the Configuration Editor help is available to explain the fields in all of the dialogs. To activate help:

1. Click in a field for which you need an explanation.
2. Click F1.

A dialog containing a description of the field(s) displays.

Figure 2–2 Configuration Settings Editor Dialog



Menu Items

At the top of the dialog are two menu items. [Table 2-1](#) describes the menu items and their submenus.

Table 2-1 *Menu Items*

| Menu | Selection | Description |
|---------|------------------------|---|
| File | Save Settings | Save the current change. |
| | Save All Settings | Save multiple changes at the same time. |
| | Revert | Restore original settings. If you modify a setting and it is not incorrect, use revert to back out of the modification. |
| | Import Profile | Import previously exported profiles. |
| | Export Profile | Export the profile. Also used to save profile configuration data to import after a product upgrade. |
| | Exit | Exit the Configuration Editor. |
| Profile | Create a Profile | Create new profiles. |
| | Delete a Profile | Delete an existing profile. |
| | Set as Default Profile | Set a profile as the start-up profile. |

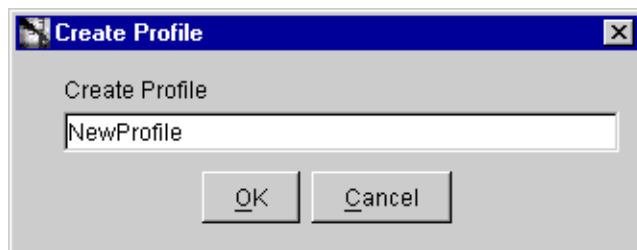
Creating a Profile

To create a new profile:

1. Select **Profile->Create a Profile** from the dropdown menu.

The Create Profile dialog displays.

Figure 2–3 Create Profile Dialog



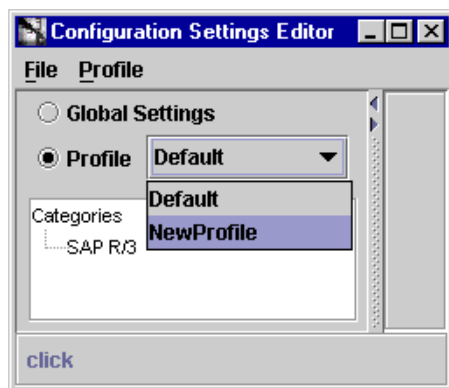
2. Enter a profile name in the Create Profile field.

A profile name is any combination of alpha or numeric characters to a length of 32 characters. Spaces are not allowed.

3. Click OK.

The new empty profile displays in the Profile dropdown list and in the settings database.

Figure 2–4 New Profile Drop Down List



Note: Currently running services are not affected by any change to the profiles. After editing an existing profile, restart any application using the service to update the resources.

Note: If the Configuration Editor is running on a UNIX system and you close the Configuration Editor after creating a new profile, profile information is not saved.

To save the newly created profile, edit the settings of any adapter for that profile and then save the profile information.

Exporting a Profile

An exported profile contains all the configuration settings previously set. It also contains the Master Key code to unlock password protected values if the Master Key was set on the machine.

1. Select **File->Export Profile** to export your profile.

The Select Profile to Export dialog displays.

2. Select a specific profile to export using the dropdown list or click **All Settings** to export all profiles.

Figure 2-5 Select a Profile for Export



3. Enter a filename to save the parameters in the To File field. For example, `parameters.txt`.
4. Click **OK** to save the profile to a file and exit the dialog.

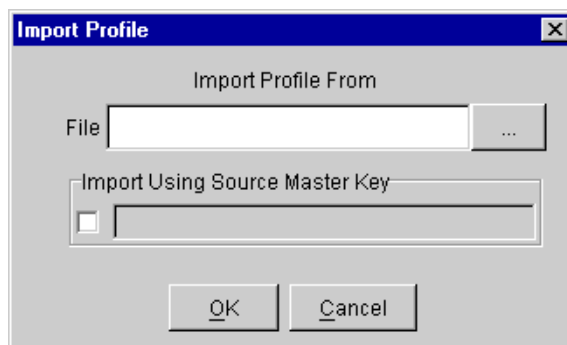
Importing a Profile

Importing a profile is useful if you want other machines to have the same setup as your development machine. To import a profile:

1. Select **File->Import Profile** to import your profile.

The Import Profile dialog displays.

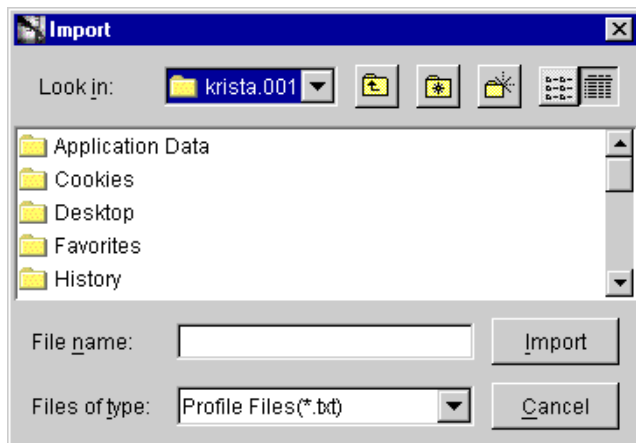
Figure 2-6 Importing a Profile Dialog



2. Enter a file name containing the export configuration parameters in the **File** field.

To browse for a file, click ... (browse). The File Selection dialog displays.

Figure 2–7 File Selection Dialog



3. Select a profile and click **Import** to return to the Import Profile dialog.
4. Check **Import Using Source Master Key** if the machine from which you are importing has a Master Key set.
5. Enter the same Master Key as set on the machine from which you are importing the profile.
6. Click **OK**.

Index

C

configuration editor
 help, 2-4
 menu items, 2-5
 starting, 2-2

D

development machine
 multiple user, 1-5

E

exit, 2-5
export
 profile, 2-8
exporting
 profile, 2-8

H

help, 2-4

I

import
 profile, 2-9
 menu item, 2-5

M

master key
 multiple user development machine (R/3
 specific), 1-5

multiple users using a windows nt development
 machine, 1-5
 setting the master key, 1-3
 setting your password, 1-3
 using the setting tool, 1-2
 work around, 1-6

menu, 2-5

menu items, 2-5

file, 2-5
 exit, 2-5
 export profile, 2-5
 import profile, 2-5
 revert, 2-5
 save all settings, 2-5
 save settings, 2-5
profile, 2-5
 delete a profile, 2-5

P

profile
 creating, 2-6
 delete a, 2-5
 exit, 2-5
 export a, 2-8
 exporting, 2-8
 import, 2-9

R

r/3
 multiple user using a windows nt development
 machine, 1-5
revert, 2-5

S

save, 2-5

save all, 2-5